

This map describes a walk conducted as part of Federation Walks 2015 in October 2015 in the Daylesford Hepburn area. The host clubs were Bayside Bushwalking Club and The Great Dividing Trail Association.



Map base sourced from Vicmap, Department of Environment, Land, Water and Planning (DELWP). Copyright © The State of Victoria, DELWP, 2015

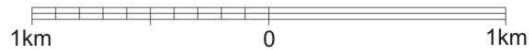
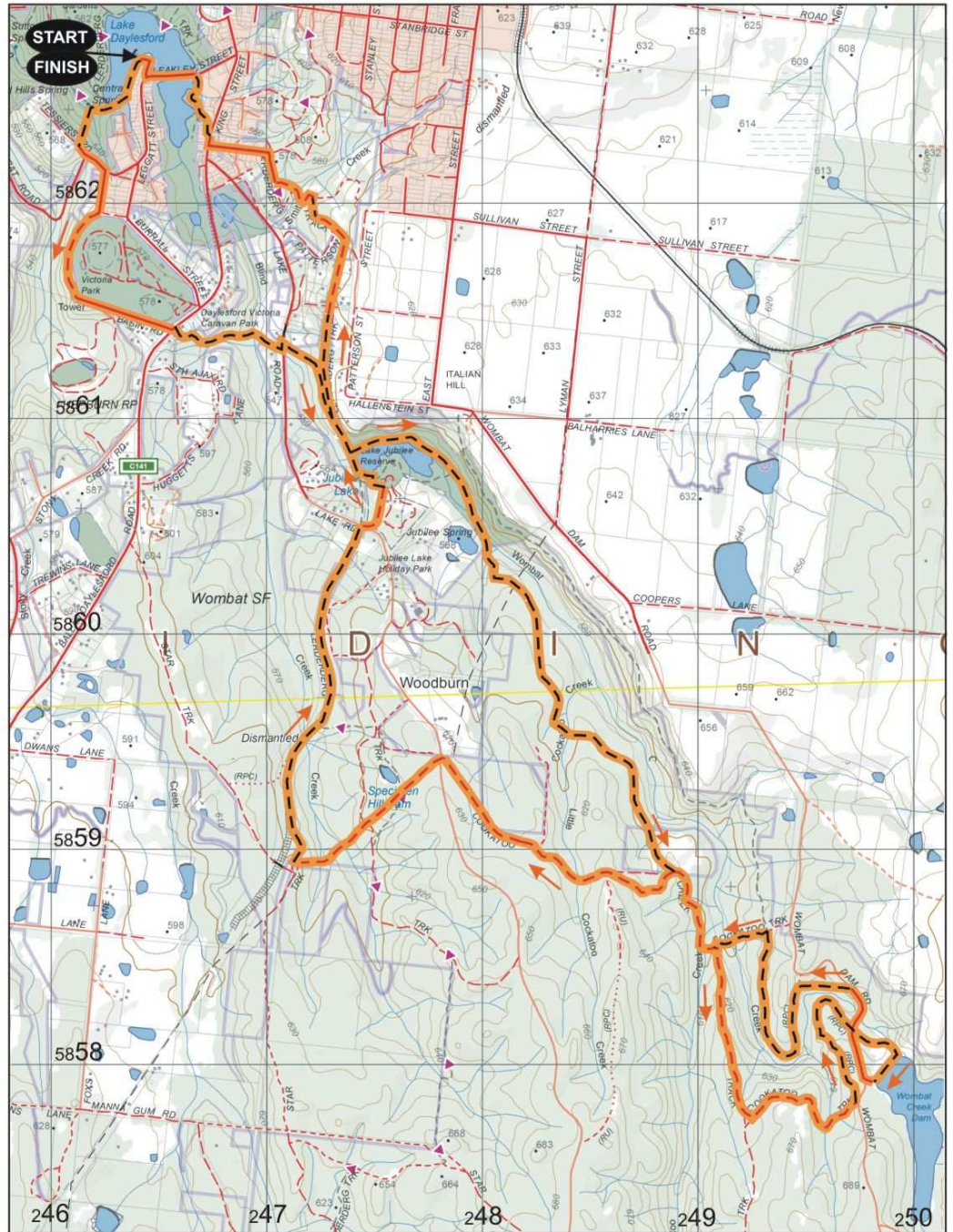
The State of Victoria and its suppliers do not warrant the accuracy or completeness of information in this publication and any person using or relying upon such information does so on the basis that the State of Victoria shall bear no responsibility or liability whatsoever for any errors, faults, defects or omissions in the information.

**Maps**

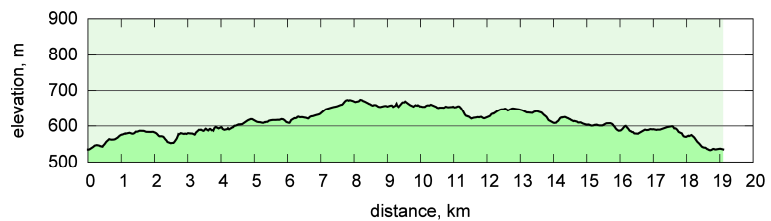
Vicmap Topo 1:25000 A0  
7723-3-N  
DAYLESFORD NORTH  
7723-3-S  
DAYLESFORD SOUTH

Vicmap Topo 1:30000 A4  
7723-3-1-3  
7723-3-2-4

**GDA94 / MGA Zone 55**



- Walk Surfaces**
- Road ————
  - Vehicle Track - - - - -
  - Foot Track - · - · - ·
  - Off Track ······
  - Walk Route ————



This map is provided solely as a guide to the subject walk. The map is not intended to be used as a substitute for the applicable Vicmap Topographic map(s). Vicmap Topographic maps may be purchased in printed form from map shops and digital (PDF) maps may be purchased online at <http://services.land.vic.gov.au/maps/imf/search/Topo30Front.jsp>