



Beauty while Sallow Willow hunting, Mt Bogong, 25-27 January 2015  
Photos: George Scott

## Contributions

Email or post news, views, club profiles, articles, photographs, sketches and letters on any topic of interest to bushwalkers (publication is subject to editorial approval) to:

editor@bushwalkingvictoria.org.au  
or  
24 Moorhouse Street  
Camberwell Victoria 3124

Deadline for the April edition:  
Monday, 17 March 2014

The statements and opinions expressed in articles are those of the author and do not necessarily represent the views or position of Bushwalking Victoria.

Editor: Joslin Guest

## Inside this issue...

Walking and Talking with the Bushwalking Victoria President.....	2	Additional Recreational Prospecting in Victorian Parks.....	8
Film Review: <i>Tracks</i> .....	2	Bushfires in the Grampians — Again!.....	9
Bushwalking Australia: Commercial Activities, Tourism and Infrastructure in National Parks, Reserves and Other Protected Areas .....	3	Post-Fire Recovery.....	11
<i>Never Truly Lost</i> —The Music .....	3	Parks Victoria Restructure vs the Union .....	11
New CEO, Outdoors Victoria .....	3	Federation Weekend 2014 Update..	11
BSAR Applied First Aid Training, 29-30 March 2014.....	4	Greater Forests National Park.....	12
<b>YHA Bushwalking Club's 75th</b> Birthday BBQ, Saturday 22 March.....	4	<b>Who's Who at BWV</b> .....	14
BTAC Calendar .....	5	Advertisements:	
Tracks and Conservation Report .....	5	Spatial Vision Maps.....	7

## WALKING AND TALKING WITH THE BUSHWALKING VICTORIA PRESIDENT

## Bushwalking and Conservation

The current Bushwalking Victoria conservation policy dates from 2006, with a minor update in 2013. Although it has served us well, we feel that it is now time to conduct a complete review of the policy. Over the past two months, I have been working with members of the BTAC committee to update our policies relating to conservation, commercial activities in parks, and coexistence with other park users (mountain bikers, horse riders, etc). This review is a response to three key factors that have developed and changed over the last 10 years.

The first is the push by governments and health authorities for the Victorian population to be more active and involved in outdoor activities. Bushwalking Victoria supports this push (and our Strategic Plan reflects that support), but we must recognise that the more successful this process is, the more pressure is placed on our parks and reserves, particularly those adjacent to major population centres.

The second is the increasing focus by the Victorian government on nature-based tourism as a means of increasing regional incomes and jobs. In recent years, there has been increased attention on the challenge of attracting interstate and overseas visitors. Infrastructure and trail development and management are seen as important parts of that focus.

The third is the increased pressure for commercial activities to occur in our parks and reserves. These activities vary from interpretive guided walks at one end of the impact spectrum to proposals for construction of major tourism-focussed infrastructure. We need to be able to state clearly and unequivocally where we stand on such activities.

Bushwalkers can justly prided themselves on following a



Minimum Impact ethos. This is summarised in **Bushwalking Victoria's** *Tread Lightly* brochure, which we provide free to any bushwalker. This ethos is also reflected in the *Leave No Trace* philosophy, which has a wide international support.

Unfortunately, not all other users of our parks and reserves are as careful and respectful of the environment. Some of our parks and trails are suffering both from inappropriate activities and from overuse.

If we want better bushwalking for Victoria, we need to have a vision of what that means in terms of land management. We need to be able to state clearly how we see the competing needs for public access and conservation being reconciled because it is exactly there that many of the key issues arise.

How do we balance the need to conserve our wonderful natural areas with the legitimate wishes of more and more people to access, explore and experience them? What kinds of facilities and activities do we support, and where?

Bushwalking Victoria has adopted the 10 principles laid down by Bushwalking Australia for commercial activities, tourism and infrastructure in national parks and reserves. These are set out on page 3.

We will be reviewing our conservation policy in the light of the changed factors I listed above and in the light of our bushwalking principles. We will publish a draft for comment and review as soon as we can and I look forward to a lively debate on this policy which lies at the heart of our relationship as responsible bushwalkers, with the natural environment we all love.

See you on the track

Tony Walker

## FILM REVIEW — TRACKS

The film *Tracks* is based on Robyn Davidson's 1977 solo 2700km, nine-month trek with four camels and a dog from Alice Springs to the Indian Ocean. The trek was written up in *National Geographic* in 1978 and later Robyn wrote a book about the experience, which was published in 1980.

John Curran directed the film *Tracks*. Marion Nelson wrote the script. Mia Wasikowska plays Robyn. Adam Driver plays Rick Smolan, the *National Geographic* photographer. *Tracks* was filmed in SA and the NT.

**The film's visuals are beautiful and the landscape is evocatively captured;** it is romanticised à la *National Geographic*, in close-up ground shots, long vistas and aerial views.

**There's not much plot. The characters are sketchily drawn and laconic.** They and incidents are not necessarily true to the book. Mia Wasikowska gives a piquant performance. Adam Driver is a nerdy Rick. All the actors

are convincing within the limitations of the stereotypes. Rolly Mintuma as Mr Eddy, an aboriginal elder, is very **funny and is the film's light-relief character.**

I enjoyed the film even though for me it lacked dramatic tension. Should-be nail-biting events—losing the camels, losing the compass, a snake slithering over the sleeping Robyn, almost running out of water and similar incidents—were unconvincing or clichéd.

When the mood-inducing music started to swell I thought **'Ah, wide expanse of ocean-type music'** and next minute over the sand dune there is the Indian Ocean. Then, a smiling Robyn with camels walking along a pristine beach towards the waiting and smiling Rick. The end.

See *Tracks* if you can—the scenery and the cinematography are worth it. And the camels!

Joslin Guest, Editor  
(I attended a preview as a guest of the promoters.)

## Bushwalking Australia

## COMMERCIAL ACTIVITIES, TOURISM AND INFRASTRUCTURE IN NATIONAL PARKS, RESERVES AND OTHER PROTECTED AREAS



## Principles

1. Any use of a park or reserve for commercial purposes should not, as determined by park management, impact adversely on the environmental integrity and natural state of the area.
2. Any park in which a commercial activity is proposed needs to have a pre-existing (hence agreed) management plan which will not be compromised by the activity.
3. Commercial activities and infrastructure developments are to be compatible with the identified values and amenities of the park, and any protected area under consideration, as documented in the park management plan. (This may also need to be supported by an activity management plan and commitments by the developer to a code of behaviour with sanctions for breaches.)
4. Depending on the type of park/reserve, commercial activities should have a strong connection with nature, the natural environment and facilitate the connection of people with nature.
5. Facilities that do not need to be in a park should be outside it and planned and controlled in such a way that they do not degrade a park or reserve through any spill-over effect.
6. Commercial uses of parks and reserves must not diminish or remove the access rights and facilities of other approved users, including the walking community and the general public.
7. Commercial uses of parks and reserves must, in addition to being commercially viable, be able to demonstrate a public benefit.
8. Commercial operators of activities or infrastructure must pay usage fees that are commensurate with the environmental impact they have and commercial benefit they receive.
9. Any commercial activity or facility that is approved for establishment in any park or reserve is to be subject to a defined period licence or lease agreement, the continuance of which requires an assessment, no less than annually, to ensure agreed minimum standards are being met with respect to impact and public benefit.
10. Commercial activities must not diminish or interfere with the wilderness experience of other approved users including the walking community and the general public.

## Other Proposal Assessment Considerations

When applying the above principles and assessing whether to accept or reject a particular commercial proposal there is a need to:

- Distinguish between physical developments and commercial activities.
- Identify what specific impacts there will be and determine whether they are acceptable, unacceptable, manageable and repairable: in the latter case, how and by whom that will be achieved?

---

*NEVER TRULY LOST— THE MUSIC*

Bushwalking has its first piece of serious music. Robert and Nancy Pallin commissioned a work from [Brendon Broadstock](#) to celebrate Robert's 70th birthday and to commemorate Robert's father, [Paddy Pallin](#).

The work had its world premier in November 2013, played by the Australian Chamber Orchestra in Melbourne, Sydney, Canberra and Newcastle.

**It's a beautiful and evocative piece, capturing both the euphoria and the hard slog of a pack-carry and that special and sometimes equivocal connection to the terrain and the elements we feel while walking and camping.**

The title of the work comes from the title of the book of **Paddy's recollections published in 1987 by UNSW Press.**

I hope that this piece will be played by other orchestras and that the ACO will record it so that it never becomes truly lost. Hear it if you get a chance.

Joslin Guest, Editor  
(I am a subscriber to the Australian Chamber Orchestra)

---

*NEW CEO OF OUTDOORS VICTORIA*

In December 2013, Chuck Berger was appointed CEO of Outdoors Victoria. He commenced in the role on 3 February. Chuck had previously been with the ACF for 10 years, most recently as its Director of Strategic Ideas responsible for strategic planning and innovation.

**Commenting on the appointment, Chuck said, 'Some of my own most life-changing moments have taken place while engaged in outdoors activities, whether sea kayaking, bushwalking or volunteering on citizen science and conservation initiatives. So for me it's a great privilege to have this opportunity to give something back to such an important sector. I'm looking forward to helping us raise our profile and our positive impact in the community.'**

Source: Outdoors Victoria

**To read Outdoor Victoria's submission to DEPI regarding the national parks camping and accommodation fees go to <http://www.outdoorsvictoria.org.au/news.php?id=29>**

BSAR APPLIED FIRST AID TRAINING – 29-30 MARCH 2014



The background to this course is that first aid capability and qualifications are a strategic objective for BSAR and its members. With the opportunity of having a member with the skills to deliver first aid training we are using the Bushwalking Victoria subsidy to offer the training at a small cost to ensure attendance and cover basic costs. This course will provide you with the skills and knowledge required to provide first aid response, life support, and the management of casualties, the incident and other first aiders, until the arrival of medical or other assistance.

As this is the first time in recent years that we have run this training, there will only be 20 places, ideally for BSAR members to do the full Applied First Aid course. Should this not be filled, those requiring a CPR refresher, can attend for that component. Should we be over subscribed, another course / CPR refresher might be offered depending on the availability of the trainer and funding.

Who should attend

- BSAR members seeking to obtain an up to date first aid qualification.

Cost and registration

- Cost is \$10, payment method will be sent on sending request to register for training. (This \$10 will not be claimable from the BSAR First Aid subsidy).
- Please send confirmation of your interest to attend to [treasurer@bsar.org](mailto:treasurer@bsar.org) with your name, club and if you need to do the full course or a CPR refresher.
- Priority will be given to those seeking to do the full course.

Location, date and timing of training

- Bushwalking Victoria, Park Vic Office, Fitzsimons Lane, Westerfolds Park, Templestowe.
- Date: 29 and 30 March, 2014
- Time: 9:00 to 16:00 on both days of the weekend.

What to bring

- Notepad and writing implement.

- Lunch, water bottle, hat and sunscreen for any outdoor sessions
- Comfortable clothing, bring BSAR clothing if you have it, to undertake first aid activities as carer or patient.

Course content

- Chain of survival
- Use of an automated external defibrillator (AED)
- Government legislation
- Stress management

BSAR course focus:

- Performing CPR
- Assessing the situation
- **Assessing the casualty's signs of life**
- Care of the unconscious casualty
- Infection control
- Asthma, Choking, Heart attack, Stroke, Bleeding
- Shock, Severe allergic reaction, Burns
- Extremes of Heat and Cold
- Poisoning, Bites and Stings (Envenomation)
- Musculoskeletal injuries
- Lifting techniques
- Bandaging procedures.

Assessment method

- Demonstration of practical skills, verbal questioning, role play/scenario work, summary evaluation questions and multiple-choice questionnaire.

Certificate

- A nationally recognised Statement of Attainment will be issued upon successful completion of the course.

Further inquiries

- Eric Krista 0419 986 878 (Registrations), [treasurer@bsar.org](mailto:treasurer@bsar.org)
- Andy Elam 0421 089 999

**YHA BUSHWALKING CLUB'S 75TH BIRTHDAY BBQ - SATURDAY 22 MARCH**

YHA in Australia was founded in September 1939. From the outset it combined bushwalking and cycling with a network of low-cost accommodation. Early walks were from hostel to hostel on the outer environs of Melbourne.

**A BBQ to celebrate YHA Bushwalking's 75th anniversary will be held on Saturday 22 March.**

Everyone who has been involved with a YHA bushwalking or other activity group is invited to attend.

Location: Yarra Bend Park, Kew - Bellbird Picnic area (Melway Map 2D ref K6).

Time: 3pm - 8pm (BBQ around 5pm) Cost: \$10/person, payable in advance.

The club will provide soft drinks, salads, bread, sausages and condiments. If you have special dietary requirements you will need to bring your own food and drinks. Canoes/kayaks will be available to paddle on the Yarra free of charge for BBQ participants. The club will lead a short walk in the area, and there will be balls, frisbees to keep everyone entertained. Everyone who attends will receive a commemorative YHA Bushwalking bucket hat.

For bookings, please contact Ann at [75year-BBQ@yhabush.org.au](mailto:75year-BBQ@yhabush.org.au)





BUSHWALKING TRACKS AND CONSERVATION CALENDAR

Activity	Details
<p>AAWT and Baw Baw feeder track clearing                      Fri 14 - Mon 17 Mar 2014                      Sponsors: Parks Victoria, Friends of Baw Baw NP, Strzelecki Bushwalking Club</p>	<p>Bushwalking clubs and individuals are invited to join local Parks Victoria staff, Friends of Baw Baw National Park and the Strzelecki Bushwalking Club over a 4-day track clearing activity on the Baw Baw Plateau (Baw Baw National Park).</p> <p>The activity will focus on clearing the walking track network between Jeep Track Flat and the Baw Baw Alpine Resort, including a section of the AAWT across Mt St Phillack. This will further enhance walking opportunities in Baw Baw National Park following the completion of track works in the remote Mt Whitelaw area of the park in 2012 and the Cascades Trail in 2013.</p> <p>Parks Victoria will establish a base camp for this activity at Jeep Track Flat from early Friday 14 March 2014. Access to the base camp is via the St Gwinear car park or Baw Baw Village. <u>Parks Victoria will supply fresh fruit, general consumables, energy food and all evening meals for participants who register an interest in attending with ample water also available at base camp.</u> Volunteers will need to bring camping gear, sturdy footwear and wet weather clothing.</p> <p>Participants are welcome for whatever time they can spare and there will be a variety of tasks to complete from very easy to arduous. All safety gear will be provided by Parks Victoria.</p> <p>For further information or to register your interest in this activity, please contact the Parks Victoria Latrobe Ranger in Charge, Andy Gillham, at <a href="mailto:agillham@parks.vic.gov.au">agillham@parks.vic.gov.au</a> or 5172 2186 or 0428 333 464.</p>
<p>Cathedral Ranges track clearing                      Sat 15 - Sun 16 Mar 2014                      Sponsors: Boroondara Bushwalkers Inc, Parks Victoria</p>	<p>Boroondara Bushwalkers Inc has agreed to be a support group for the Cathedral Ranges State Park under the auspice of Parks Victoria and ranger Rhyl Shaw. Our first project will involve two groups. One group will start at Sugarloaf Saddle and trim/ clean their way towards Farmyard. The second group will trim/clean the nature trail; numbers and logging activity permitting this may include the Little River Tk. (Locations may be subject to change.) Parks Victoria will provide training, tools, PPE, etc and insurance cover.</p> <p>We will work on the Saturday and bushwalk on the Sunday. We will have a base camp (tents) on Friday and Saturday nights. BYO everything, including water.</p> <p>Members of other bushwalking clubs and individual members of Bushwalking Victoria are invited to participate. <u>You must register interest to participate as we need to advice Parks Victoria about numbers.</u> Contact Joslin Guest at <a href="mailto:president@boroondarabushwalkers.org.au">president@boroondarabushwalkers.org.au</a> or 9882 7629 or 0400 988 668.</p>

ACTIVITY REPORT

Australia Day Week by BTAC Events

Bushwalking Victoria had three events scheduled over the Australia Day weekend: AAWT, track maintenance and Sallow Willow hunts at Falls Creek and Mt Bogong.

Unfortunately AAWT was again cancelled because of bushfire threat. It will be rescheduled. So watch for the dates.

The annual Falls Creek willow hunt was led by Michael Haynes, Phil Brochie and Dave Rimmer. Parks Victoria was pleased with the count of willows destroyed. There was a great camaraderie among the participants who came from many bushwalking clubs around Victoria. The participants stayed at the Viking Lodge.

Another ascended Mt Bogong with overnight packs for a willow hunt, with a base camp at Cleve Cole Hut. Jim Harker lead this group. The ascent to the work point was

longer than planned because the promised Parks Victoria 4WDs that were to take the group part of the way were not available, but every one managed the climb. Again, the ranger was pleased with the result and said the work was of great assistance in maintaining the control over the noxious Sallow Willow.

I was looking forward to participating in the inaugural Mt Bogong willow hunt, but two days before we were to go I brought down by a virus that stopped me from attending. Special thanks to Jim Harker for taking over. And thank you everyone who participated in the willow hunts.

We have some interesting things in the pipeline for this year so keep your eyes open for our announcements of these upcoming events.

Wishing you all fun on the tracks.

Charlie Ablitt, BTAC Projects



Left and above: Falls Creek willow hunt  
Photos: Gabrielle Bibby, Bayside Bushwalking Club

Right and below: Mt Bogong willow hunt  
Photos: Jim Harker and George Scott







Plan your next escape with our **Outdoor Recreation Guides**.



For the full range of Outdoor Recreation Guides, please call us or visit our website

Download the latest **ORG** iPhone Apps.



**Buller Howitt**



**Bogong**



**Wilsons Prom**

Call **1300 36 67 96** or visit [www.svmaps.com.au](http://www.svmaps.com.au)

## ADDITIONAL RECREATIONAL PROSPECTING IN VICTORIAN PARKS

The Victorian Government Response to Victorian Environmental Assessment Council (VEAC) *Investigation into Additional Prospecting Areas in Parks* was tabled in Parliament and released on 4 February 2014. The report and other details about the investigation are available from the [VEAC website](#), including maps of the new areas that will be made available for recreational prospecting.

VEAC reports are:

- Investigation into Additional Prospecting Areas in Parks: [http://www.veac.vic.gov.au/documents/VEAC%20Prospecting%20Report\\_int.pdf](http://www.veac.vic.gov.au/documents/VEAC%20Prospecting%20Report_int.pdf)
- The Potential Impact of Minerals Prospecting on Streams in Victorian National Parks: <http://www.veac.vic.gov.au/documents/Consultancy%20report.pdf>
- Overview map: [http://www.veac.vic.gov.au/documents/VEAC%20Prospecting\\_Map%20A.pdf](http://www.veac.vic.gov.au/documents/VEAC%20Prospecting_Map%20A.pdf)
- Detailed maps of the new areas: [http://www.veac.vic.gov.au/documents/VEAC\\_Prospecting%20Maps\\_B-G.pdf](http://www.veac.vic.gov.au/documents/VEAC_Prospecting%20Maps_B-G.pdf)

The additional prospecting areas are:

- Lerderderg State Park—additional 573 ha
  - Yankee Creek (46ha)
  - Morning Star (527ha)
- Lake Eildon National Park—additional 2810ha
  - Jerusalem Creek
- Alpine National Park—additional 18956ha
  - Howqua Hills South (509ha)
  - Howqua Hills East (1813ha)
  - Howittville (1167ha)
  - Wombat Post Office area (5492ha)
  - Eustaces (9975ha).

Prospecting activity in the eight areas will be monitored during the first 12 months for environmental and cultural impact. The Department of Environment and Primary Industries will work with the Department of State Development, Business and Innovation and Parks Victoria to refine the details of this review. The review will involve collecting data on the nature and distribution of and participation in recreational prospecting in the eight new areas and will include consultation with the relevant traditional owner groups. The outcome of this review will determine whether or not these additional areas will continue to be available for prospecting.

In a press release, the Victorian Coalition Government justifies the approval to extend recreational prospecting opportunities on the following grounds:

- There has been prospecting in national parks since 1972 and it is already permitted in over 60000ha.
- The Victorian Labor Government approved prospecting in more than 10 parks listed in the *National Parks Act 1975*.

- The new area is only a modest increase in the three parks.
- The ministerial press release said that the increase is **the price the community has to pay to 'fix environmental protection that Labor never even bothered to look at'**
- **The approval improves the 'balance' of usage in the state's park network.**

VEAC made a number of other recommendations which will be considered by the government working group including:

- Training and authorisation for Parks Victoria staff.
- The need for significant additional enforcement above current levels .

**[Editor's note: The above two recommendations do not sit well with anticipated cost-cutting and staff reductions at Parks Victoria. See also the article on page 11.]**

- Longer term research into the potential effects of recreational prospecting in parks, depending on the outcome of the 12-month review.
- The need for improved community information on the location of areas available for prospecting, cultural heritage responsibilities, safety and access.

The president of the Prospectors and Miners Association of Victoria, Rita Bentley, said she was disappointed in the outcome of the VEAC investigation. She described the **proposed additional area as 'a few dots on a map'**. **[Editor's note: According to the VEAC report, an estimated 52370ha of Victorian parks is currently open to recreational prospecting. The additional 'few dots' come to more than 22000ha.]**

Ms Bentley also said that VEAC does not appreciate the social and heritage value of fossicking, which she describes as a benign activity.

VEAC does not necessarily consider fossicking as being a benign activity. It reported that it had seen clear evidence of damage from prospecting, such as unfilled holes and collapsed stream banks, and the report noted the concerns of Melbourne Water that prospecting could undermine efforts to improve river health.

A reason for fossickers disappointment may be that the previous areas open for fossicking are pretty well scoured clean and fossickers need new areas if they are to increase their chances of finds.

No other state in Australia allows prospecting in its national parks. Nor is prospecting permitted in national parks managed by the Federal Government. The *Victorian National Parks Act 1975* will need to be amended accordingly to include the additional area. Let us hope that proposed addition in Victoria is not legislated.

Joslin Guest, Editor



### BUSHFIRES IN THE GRAMPIANS — AGAIN!

The image below shows the Grampians burn scar (obtained by Chris). You may be able to see that Mount Zero escaped, and it appears that Reids Lookout and Boroka Lookout did too. Zumsteins has suffered damage and the McKenzie Falls area appears to have been burnt out, as has the whole area north of Reids Lookout, including the Asses Ears Range, once again.

Wimmera Bushwalkers Newsletter, Feb 2014





Two pictures taken during the January bushfire (Photos: Chris, Wimmera Bushwalkers)



Mount Stapylton after the devastating January bushfire (Photo: Chris, Wimmera Bushwalkers)



### POST-FIRE RECOVERY

#### Grampians National Park

Scott Crabree, Ranger at the Grampians National Park, has advised that Parks Victoria will be requesting assistance from bushwalkers to help rebuild assets in the park after the current fires. Before the call for help goes out, Parks Victoria will need to extinguish the fires, assess the damage done, assess the recovery work required and develop the recovery plan and schedule. This will take some months. Watch out for the call to help. BTAC will be very active in supporting the recovery work.

#### BlazeAid

After the 2009 bushfires, family, friends and local volunteers got together to repair the burnt fences on Kevin and Rhonda **Butler's Kilmore East farm. In a week they did work that would have taken the couple months by themselves. To show their gratitude, Rhonda and Kevin decided to try to help a few others with their fencing. BlazeAid was born.**

Since then, thousands of BlazeAid volunteers have rebuilt hundreds of kilometres of fences in areas including Kilmore East, Kinglake, Kinglake West, Pheasant Creek, St Andrews, Strathewen, Flowerdale, Wandong, Mt Disappointment, Glenburn, Murrindindi and Clonbinane. They have removed hundreds of kilometres of damaged fencing, removed fallen trees from fence-lines, helped with gardening projects and even built chook sheds.

Now volunteers are needed again. Containing stock in an area for feed is a priority after bushfires.

Being a BlazeAid volunteer is easy. Fencing experience is not required, just a willingness to give it a go. There are jobs other than fencing and not all jobs are physically demanding.

In areas affected by severe bushfires, BlazeAid establishes base camps for volunteers. Volunteers need to bring their own tents, camper trailers or caravans, as well as suitable work clothes and footwear. All meals, fluoro vests, safety items, tools and equipment are provided. The farmer provides all the replacement wire, posts and gates and relevant materials.

To see volunteer opportunities are available, visit <http://blazeaid.com.au/>

#### Fire-affected Wildlife

Reports about bushfire devastation tend to concentrate on human life, houses and commercial assets, including livestock. **Native animals suffer dreadfully during and after bushfires. They are not an 'asset' and so their plight is frequently ignored.** The level of injury, suffering and loss of native animals is especially horrible in the Grampians fires. Surviving injured and starving native animals rely on the few individuals who make up the various regional Wildlife Networks to alleviate their suffering. Wildlife rescuers and shelters have a great deal to do at present and even then they can help only a tiny minority of the injured and starving. Only rangers are currently permitted in the fire ground to attempt to rescue or otherwise assist animals. The ordinary public can only assist where animals have managed to make their way out of the fire zones.

To see how you can help—by making a donation or becoming a Wildlife Volunteer—visit the Wildlife Victoria website at <http://www.wildlifelife.org.au/>

---

### PARKS VICTORIA RESTRUCTURE VS THE UNION

On 15 January, the *Weekly Times* had a story by Chris McLennan announcing a case being taken to the Fair Work Commission by the Community and Public Sector Union. The union, representing 1000 Parks Victoria employees is challenging Parks Victoria to tell its staff whether they still have jobs and what changes are being made to them. The union claims that half of Parks **Victoria's staff will be affected by the restructure and there will be redundancies and reductions in salaries. Parks Victoria's CEO Bill Jackson responded that all possible effort was being made to consult with all affected employees. The dispute erupted during a consultation period, which was to end on 30 January.**

FriendsNet, Feb 2014  
newsletter of the Victorian Environment Friends Network

### FEDERATION WEEKEND 2014 UPDATE

Rawson and Surrounds

Friday 7, Saturday 8, Sunday 9 November 2014

The Federation Weekend 2014 Walks Planning Subcommittee has been very busy carrying out walk reces.

- Some of the iconic walks which appeared on the program the last time there was a Federation Weekend in the area back in 2004 will be repeated.
- Seven new walks will be offered.
- The hub for the weekend will be the Rawson Village.
- An all-inclusive accommodation and meals package has been negotiated with the venue owners.



## GREATER FORESTS NATIONAL PARK

David Lindenmayer, Professor at the Fenner School of Environment and Society at the Australian National University, is calling for the establishment of a Greater Forests National Park in the Central Highlands of Victoria to save Mountain Ash forest and Leadbeater's Possum (Victoria's faunal emblem) from extinction.

Clear-fell logging and bushfires mean that there are now only about 2000ha of old growth forest left, spread across about 150 different patches. This is estimated to be 1.5-3% of the historical area of old growth forest.

**Professor Lindenmayer says that to preserve Leadbeater's Possum and the Mountain Ash forests ecosystem, we need a big national park that connects these remnants and expands the area of existing parks. The park that needs to**

be created must also be big enough to cope with large-scale major disturbance events such as wildfires.

**Read Professor Lindenmayer's article:**

<http://theconversation.com/why-victoria-needs-a-giant-forest-national-park-18452>

On 11 February, the Royal Society of Victoria issued a **press release supporting actions to save Leadbeater's Possum** and the establishment of a Central Highlands National Park.

The proposed Greater Forests National Park or a Central Highlands National Park would include in a single park **some of Victoria's great bushwalking areas. We should support the proposal. You can indicate your support at** <http://www.greatforestnationalpark.com.au/supporters.html>

Joslin Guest, Editor



Promotion and Advancement of Science and Technology

**Patron:**

The Hon Alex Chernov AC QC, Governor of Victoria

*President*

Dr William D Birch AM BSc (Hons) PhD

MEDIA RELEASE

11 February 2014

ROYAL SOCIETY OF VICTORIA WANTS ACTION TO SAVE LEADBEATERS POSSUM

**The Royal Society of Victoria is joining the calls for urgent action to save the State's faunal emblem, Leadbeater's Possum (*Gymnobelideus leadbeateri*), from extinction.**

Australia has the worst record in the world for mammal extinctions, with 27 species recorded as becoming extinct since European settlement. Leadbeater's Possum was also thought to be extinct until it was rediscovered in 1961 in the Central Highlands of Victoria. It is listed as an endangered species through the State's *Flora and Fauna Guarantee Act* and is listed internationally on the *IUCN Red List of Threatened Animals*.

The Society strongly supports the establishment of a new national park that preserves the required habitat for this critically endangered animal. The possum lives in tall eucalypt forests, and to survive requires hollows in old trees. As well, we call for an end to forest practices that are steadily reducing remnant old growth forests in the Central Highlands. This species can only be saved by conservation measures in Victoria.

**As Royal Society President, Dr Bill Birch AM states, "This is an issue that goes to the heart of the Royal Society's role in advocating for a scientific approach to the preservation of biodiversity in Victoria. The Society was a key player in the establishment of the Wilsons Promontory National Park in the late 19<sup>th</sup> century".**

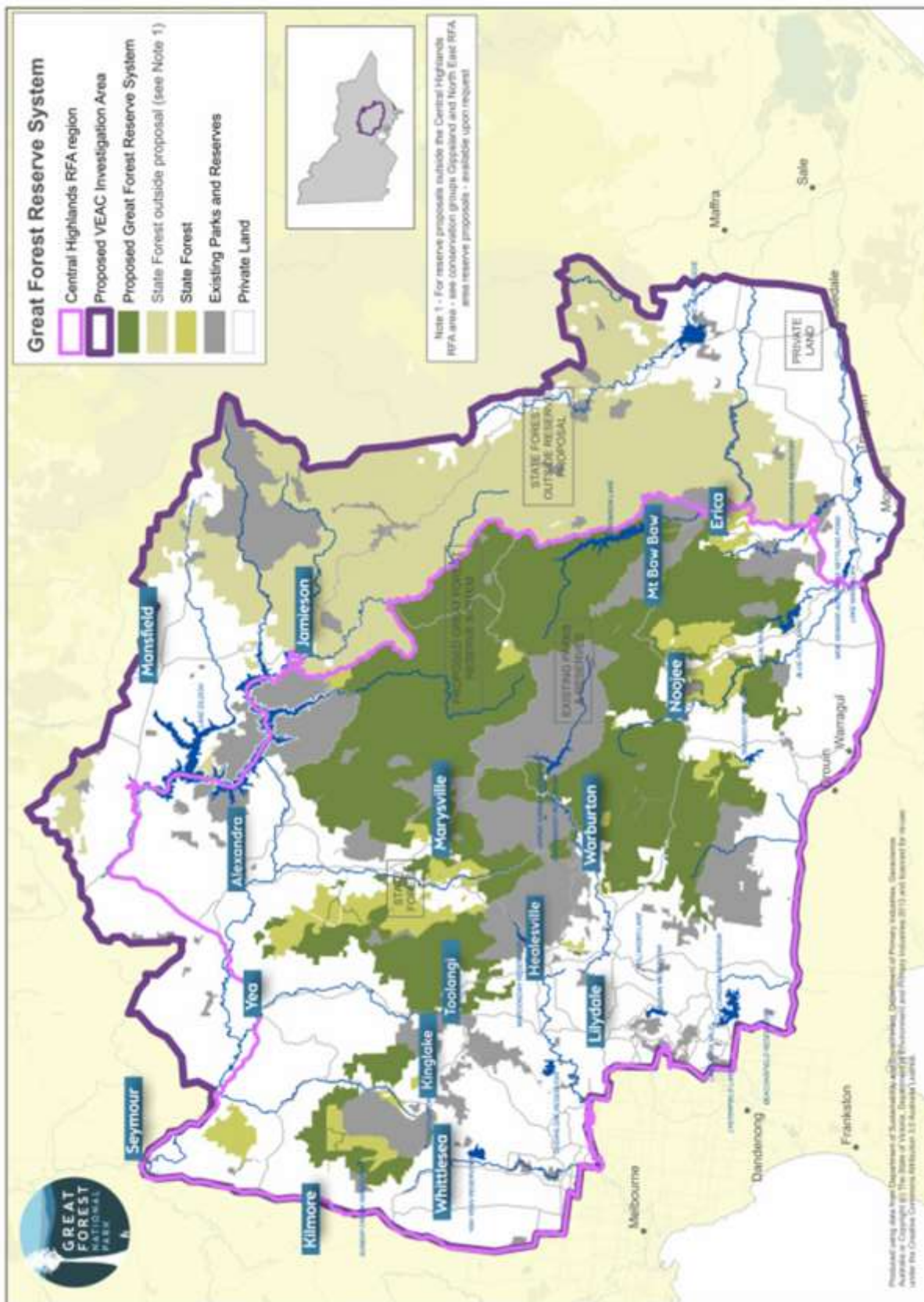
The Society urges the government to fast-track the release of the long-awaited report on the status and preservation of **Leadbeater's Possum and to rapidly implement any recommendations with respect to maintaining and expanding suitable habitat.** The Society also indicates its willingness to be involved in ongoing discussions over any proposed Central Highlands National Park so that all aspects of its scientific significance may be embraced.

The Royal Society of Victoria

Supporting and promoting science since 1854

Contacts: Dr Jillian de Araujo, Executive Officer, 9663 5259

[jillian@sciencevictoria.org.au](mailto:jillian@sciencevictoria.org.au)



Source: <http://www.greatforestnationalpark.com.au/park-plan.html>

## Who's Who at Bushwalking Victoria

Reg No A0002548Y ABN 88 344 633 037

### Office

Office Manager: Patricia Scales  
 PO Box 1007 Templestowe Vic 3106  
 Phone: 8846 4131 Fax: 9846 7473  
[admin@bushwalkingvictoria.org.au](mailto:admin@bushwalkingvictoria.org.au)  
[www.bushwalkingvictoria.org.au](http://www.bushwalkingvictoria.org.au)

### Office Hours:

Monday: 9.00am – 4.00pm  
 Tuesday: 9.00am – 3.30pm  
 Wednesday: 9.00am – 3.30pm

### Office Bearers

President: Tony Walker  
[president@bushwalkingvictoria.org.au](mailto:president@bushwalkingvictoria.org.au) 0414 278 121  
 Vice President: Chris Towers  
[vp@bushwalkingvictoria.org.au](mailto:vp@bushwalkingvictoria.org.au)  
 Secretary: Fred Bover  
[secretary@bushwalkingvictoria.org.au](mailto:secretary@bushwalkingvictoria.org.au)  
 Treasurer: John Creaser  
[treasurer@bushwalkingvictoria.org.au](mailto:treasurer@bushwalkingvictoria.org.au)

### General Board Members

Charlie Ablitt [charlie@bushwalkingvictoria.org.au](mailto:charlie@bushwalkingvictoria.org.au)  
 Megan Major [megan@bushwalkingvictoria.org.au](mailto:megan@bushwalkingvictoria.org.au)  
 Terry Sydes [terry@bushwalkingvictoria.org.au](mailto:terry@bushwalkingvictoria.org.au)  
 Robyn Shingles [robyn@bushwalkingvictoria.org.au](mailto:robyn@bushwalkingvictoria.org.au)  
 Val Wake [val@bushwalkingvictoria.org.au](mailto:val@bushwalkingvictoria.org.au)

### Standing Committees

Bush Search and Rescue Victoria  
 Convener: Peter Campbell  
[convener@bsar.org](mailto:convener@bsar.org)

### Bushwalking Tracks and Conservation Convener:

Megan Major  
[tracks@bushwalkingvictoria.org.au](mailto:tracks@bushwalkingvictoria.org.au)  
 Bushwalking Tracks and Conservation Projects Coordinator:  
 Charlie Ablitt  
[conservation@bushwalkingvictoria.org.au](mailto:conservation@bushwalkingvictoria.org.au)  
 Land Management Submissions: Phil Brotchie  
[land@bushwalkingvictoria.org.au](mailto:land@bushwalkingvictoria.org.au)

### Specialist Officers

Insurance: [insurance@bushwalkingvictoria.org.au](mailto:insurance@bushwalkingvictoria.org.au)  
 Publications and News Editor: Joslin Guest  
[editor@bushwalkingvictoria.org.au](mailto:editor@bushwalkingvictoria.org.au)  
 Federation Walks Coordinator: Sylvia McLean  
[sylvia@bushwalkingvictoria.org.au](mailto:sylvia@bushwalkingvictoria.org.au)  
 Web Manager: Chris Towers  
[chris@bushwalkingvictoria.org.au](mailto:chris@bushwalkingvictoria.org.au)

### Consultants

Strategy Consultant: Elaine Towers  
[strategy@bushwalkingvictoria.org.au](mailto:strategy@bushwalkingvictoria.org.au)  
 Honorary Auditor and Accounting Consultant:  
 Stephen Skaleskog

### Representatives on Other Organisations

Bushwalking Australia:  
 Victorian Delegate: Tony Walker  
 Victorian Deputy Delegate: Chris Towers  
 Please contact via the office

### Organisations where BWV Members Provide a Bushwalking Perspective

Grampians Peak Trail Task Force: Phil Brotchie  
 Living Links Steering Committee: Tony Walker



## Bushwalking News Victoria

If undeliverable  
 please return to

Bushwalking Victoria Inc.  
 PO Box 1007  
 Templestowe 3106  
 Victoria