



Bushsleeping, Cobungra Ditch, Mt Hotham  
Boots'n'all, April 2011 No. 352 (Photo: Fiona, Peninsula Bushwalking Club)

## Contributions

Email or post news, views, club profiles, articles, photographs, sketches and letters on any subject of interest to bushwalkers (subject to editorial approval) to:

editor@bushwalkingvictoria.org.au  
or  
24 Moorhouse Street  
Camberwell Victoria 3124

Deadline for the June edition:  
**Monday, 16 May 2011**

The statements and opinions expressed in articles are those of the author and do not necessarily represent the views or position of Bushwalking Victoria.

Editor: Joslin Guest

## Inside this issue...

Walking and Talking with your President .....	2	Report Track Problems .....	7
Track Maintenance Program .....	3	Sunrise and Sunset .....	7
Track Clearing in a Historical Area of the Yarra Ranges NP .....	3	Walk in her Shoes Challenge .....	9
Bushwalking Environment:		Around the Tracks:	
BEC News from Around the State	4	The Grampians .....	8
Cattle in the Alpine NP .....	5	Wilsons Prom After Easter .....	9
Natural Environment .....	8	Firebreaks in the Dandenongs ...	10
		Who's Who at BWV .....	12

## WALKING AND TALKING WITH YOUR PRESIDENT

### New Board Members Wanted

The last two issues of Bushwalking News Victoria have included items seeking new Board members to replace the three women Board members who have indicated that they will not be renominating when their current term expires at the AGM on 18 June. To date we have received only one response.

Bushwalking Victoria has more than 6,500 members and the Board comprises five office bearers—president, vice-president, treasurer, secretary and assistant secretary—plus five general Board members; a total of 10. There must be more than the 10 current Board members in our clubs with enthusiasm and passion for walking with knowledge and skills that they can contribute to promoting bushwalking and representing the interests of all recreational bushwalkers.

### What is the role of the Board?

Like all corporate entities, Bushwalking Victoria is required by law to establish a body such as the present Board to govern the organisation on behalf of the members and to be accountable to the members annually.

The Board is not a member or stakeholder representative body. That is not its role as defined in the constitution. The constitution quite properly defines it as the body responsible for governing and managing the operations of Bushwalking Victoria. In carrying out that role it takes into account all factors including advice from members and other stakeholders and then makes decisions it considers are in the best interests of Bushwalking Victoria and its members.

### What's involved?

Monthly Board meetings are held from 5.30pm on the first Tuesday of each month, except for January (no meeting) and November when it is the second Tuesday because Melbourne Cup Day falls on the first Tuesday. The meetings are held in the conference room adjoining the Bushwalking Victoria office in Westerfolds Park, Templestowe. While each office bearer has a defined role, my aim is that each Board member should also have a defined responsibility such as a particular portfolio (eg. communications) or project that fits their interests, skills and capabilities.

### But I'm not an expert bushwalker!

Neither am I. I also suspect that my fellow office bearers and Board members would say the same about themselves. While there are no specific skills, knowledge or experience required to become an office bearer or Board member, people with significant experience in areas such as business, management, marketing, education, training, IT or conservation are encouraged to consider joining our dedicated and hard-working Board team.

Many clubs have a high percentage of women members and consequently I am keen to see that the Bushwalking Victoria Board has a mix of men and women. Based on current nominations there will only be one woman on the Board come the AGM in June.

With the increasing numbers of retired or semi-retired members in our clubs there must be many bushwalkers out there with backgrounds in areas such as academia, business, management, administration, education, science that have skills and knowledge that Bushwalking Victoria needs. You might be such a person yourself, or you may know of someone. If you want to know more, or recommend someone you know, please contact me via email to [president@bushwalkingvictoria.org.au](mailto:president@bushwalkingvictoria.org.au) or through the Bushwalking Victoria office on 8846 4131.

### Future Walker Project: Web Sites for Clubs?

Is your club one of the 26 Bushwalking member clubs without a web site, or perhaps one of the 10 or so clubs with a basic or outdated web site? Would your club like to change that situation but doesn't have knowledge, skills or understanding of the internet within the club to create and maintain a web site? Our new *Future Walker* project aims to help clubs address this situation.

Initially the project is to obtain professional expertise to work with Bushwalking Victoria to develop and make available a package that will provide clubs with: a professionally designed website; assistance with developing content for the site; access to easy to use software to maintain the site; training and support resources to enable clubs to maintain their sites into the future as new members take on the responsibility for managing the site; a domain name (ie. [www.club\\_name.org.au](http://www.club_name.org.au)); and email addresses to facilitate club administration (ie. for the president, secretary, members, membership enquiries, eg. [president@club\\_name.org.au](mailto:president@club_name.org.au)).

A project team comprising Sally Walker (Waverley) Andrew Piddington (Bayside), my wife Elaine (CAEX) and myself has been established to develop and oversee the project. The team has already had a couple of meetings and been researching different aspects of what we plan to achieve and how we plan to achieve it. To register interest or to be kept

informed about the development and implementation please contact me via email to [president@bushwalkingvictoria.org.au](mailto:president@bushwalkingvictoria.org.au) or through the Bushwalking Victoria office on 8846 4131.

**Leadership Forum**

The Leadership Forum replaces the annual Presidents’ Day and will be a fantastic opportunity for the leaders of our club network to come together to discuss bushwalking matters, learn more about the work undertaken by Bushwalking Victoria and member clubs, and to contribute ideas and opinions that will build a stronger and more successful Bushwalking Victoria and club network. Unlike the Presidents’ Day, attendance at the forum is open to members of the club leadership team, ie. the President, Vice President, Secretary and Treasurer, with each club being able to nominate up to three members to attend.

The forum will be from 9.00am on Saturday 18 June 2011 in the Conference Room adjacent to the Bushwalking Victoria office at Westerfolds Park, Fitzsimons Lane, Templestowe.

Chris Towers

**TRACK MAINTENANCE PROGRAM**

<p>4 August 2011 Yarra Ranges NP</p>	<p><b>Yarra Ranges NP</b> <b>WE NEED YOU. PLEASE OFFER YOUR SUPPORT TO COMPLETE THE PROJECT</b> (see also article below)</p>
<p>Sunday 16th October 2011 Big Tree/Cora Lyn</p>	<p>For all activities Contact Steve Robertson for details and if you want to attend <a href="mailto:srob7859@bigpond.net.au">srob7859@bigpond.net.au</a> or 9762 5367</p>

**Track Clearing in a Historical Area of the Yarra Ranges NP**

On Sunday, 17 April, a lovely group of 16 people from Maroondah Bushwalking Club, Melbourne Bushwalkers, Catholic Walking Club of Victoria, Waverley Bushwalking Club and VMTC met in Warburton East to venture out on a glorious Sunday to track clear on the closed Goldfields Track in the Yarra Ranges NP, so it could be reopened by Parks Victoria after being closed for two years.

Following a safety briefing by me and collecting our equipment, we left, and very quickly got our toes wet crossing the Yarra River.



(Photo: Steve Robertson)

After that we were met by a very overgrown track which we skilfully cleared in single file. This is beautiful bush to walk through with so much history we all thought as we trekked through this area surrounded by the remnants of gold mining of years gone by.

We all had a most enjoyable day, with people enthusiastically volunteering to attend similar events in the future. Unfortunately time ran out and only about half the track was cleared so **another event will be organised for Sunday 14 August to complete this track clearing.** Then we can say: TRACK OPEN

**Steve Robertson**  
Convener, Conservation Projects

## THE BUSHWALKING ENVIRONMENT

### BEC News from Around the State

A number of parks remain closed due to storm damage. All walkers should check the Parks Victoria website to confirm the status of parks and tracks before setting out on walks ([www.parkweb.vic.gov.au](http://www.parkweb.vic.gov.au) or phone: 131 186).

#### Grampians—report by Phil Brotchie

Large areas of the Grampians NP remain inaccessible to traffic and walkers owing to immense damage caused by the recent floods.

On 22 February, the Grampians NP Centre hosted a talk and walk on the flood damage to the Grampians (which I attended), highlighting the fact that it may take one to three years to fix some of the roads and walking tracks. There is even the possibility that some may never be repaired.

#### ➤ Open walking Tracks

- Boronia Peak (I walked this with Grampians BWC on 20 February; it is in good condition), Chautauqua Peak (east side only), Clematis Falls and the Fyans Creek Loop
- Hollow Mountain, Flat Rock to Mt Stapylton, Mt Stapylton Loop
- Mt Zero, Heatherdale Quarry, Beehive Falls and Briggs Bluff (I walked via Beehive Falls to Briggs Bluff with Wimmera BWC on 20 March; the track was in good condition)
- Mt Sturgeon and the Piccaninny

#### ➤ Open camping grounds

- Plantation and Stapylton camping grounds (note that access to Stapylton camping ground is via Plantation Rd from Northern Grampians Rd)
- Troopers Creek camping ground.

#### Goldfields Central Victoria—report by Alison Lanigan

- Slaty Creek No 1 Campground in the Creswick Regional Park has been reopened and is available for campers.
- Tipperary Track has reopened—the eastern side of the Tipperary walkers-only track to Bryces Flat is part of the Dry Diggings section of the Goldfields Track and is located close to Daylesford.
- The Lerderderg Track is covered with flood debris approximately 50 metres north of the bridge over the Lerderderg River on North Blackwood Rd. There is a set of steps which come down from the water race to the edge of the river. This is where the track is blocked. With the current water levels it is very easy to rock hop across the river and proceed down to the bridge and North Blackwood Rd.

#### Wilsons Promontory

During the past month, Ranger in Charge, Brett Mitchell, approached us regarding Bushwalking Victoria undertaking some maintenance activities on the prom. We subsequently contacted Brett and indicated that we would be prepared to help out in the next 12 months. Chris Towers also had a brief meeting with Brett about our possible involvement.

Two areas under consideration are marking and clearing a track in the northern wilderness zone or works in the Waterloo Bay section.

The following comments were received from Ian McKellar, which are particularly relevant:

‘As for as the wilderness area of the North Prom I have walked there several times but not since the 2009 fire. As it has been virtually closed since then I presume there will be no signs of the previous vague tracks or the flagging they had. I was also aware that several walkers had got completely lost. I think there had been three such incidents in the two years prior to our walk in March 2004. As a result the park introduced a self assessment form in May 2003. I presume most of the people got into trouble in the section between Chinamen’s Long Beach and Chinamen’s Creek, although there was another tricky bit about a kilometre west of Chinamen’s Creek. If we are to mark these sections it will have to be done very carefully and after some discussion with the Parks Victoria rangers who assisted in the searches, Jim Whelan should be contacted about that and also the vegetation issue. Perhaps an occasional tall post like a snow pole might be used. Even if successive poles were not visible from each other, a numbered pole with a compass bearing to the next one is one idea. The vegetation used to be low shrubs with some patches of eucalypts and some deep swampy parts. Ti-tree was not very common. If the track is not going to be used frequently just clearing the vegetation is not going to be worthwhile as it would have to be redone frequently.

‘Regarding the Waterloo Bay campsite. Some levelled sites would make the experience in this delightful site more pleasant. Earthwork only, I suggest, not with timbered edges but with some attention to the drainage around them.

‘The Waterloo Bay track east of Boulder Saddle is badly eroded. Some years ago a load of green plastic grid and timber supports was taken out and dumped near the track, it is still there. The same material has been used with great effect on the new Tongue Point track; There would considerable capital cost involved in doing more of the track that way but it would be well worth while, that is where a grant would be helpful. Bushwalking Victoria volunteers could probably be trained to install it.’

### Brisbane Ranges—report by Carolyn Edwards

#### ➤ Current closures:

- Anakie Gorge Walk (picnic ground open)
- Stony Creek picnic ground
- Switch Rd
- Little River picnic ground.
- McLeans Highway (closed between Marshalls Rd and Thompsons Rd)
- Lease Rd (closed between Yankee Gully Rd and Banksia Track)
- Saw Pit Gully Rd
- Little River camping ground
- Lower Stony Creek Reservoir
- Burchell Trail (closed between Old Mill camping ground and Boar Gully camping ground)

All public roads have suffered damage with some still closed due to public safety concerns. Park staff are working to have major picnic areas open by the Easter break. However this may not be possible due to the extent of damage in some areas. There is an issue with the public accessing closed areas and destroying signage and gates to access closed areas. It is a major concern both for their own safety and they are hindering the rehabilitation process.

- The **You Yangs Regional Park** also remains closed. Parks Victoria expects to be able to re-open some areas of the park in time for the Easter holiday period.

### State Forest Walking Track Project

The key walk experience of this project is the 3 day-2 night Walk into History from Warburton to Powelltown. This walk includes some popular key day-walk sections and day-walk loops.

Below are the key outcomes identified at our meeting and field inspection on the 2 March for the Walk into History track.

- The key impediments in the current walk are:
  - Walk poorly connected into both Warburton and Powelltown
  - Poor/inadequate signs to direct/inform walkers
  - Poor campsite with no toilet and generally degraded infrastructure
  - Multiple crossing structures over gullies/rivers that are either degraded or really no longer exist
  - Degraded/eroding sections of walking track, particularly on steep sections
- Starlings Gap and Ada No 2 Mill will be consolidated as the primary campsites along the walk. Camping infrastructure is to be improved at Starlings Gap and Ada No 2 Mill, with priority given to installing a toilet at the location we inspected just south of the boardwalk from Ada No 2 Mill. Individuals may still camp at other locations along the walk, but these sites will not be promoted as campsites (and no infrastructure is to be provided at these sites other than interpretive information such as that provided at Federal Mill).
- There is a proposal to develop a new track from the Ada Tree to New Ada Mill. This will depend on funds being available after other projects are financed.

### Grand Strzelecki Track

Work has been progressing along the Billys Creek section, this is nearly complete, Permit issues and problems with the cultural heritage plan have been responsible for the delay in completion of the track.

**David Rimmer**  
Manager Bushwalking Environment

### Cattle in the Alpine NP

The 400 cattle have now been removed from the Alpine Park. However, we should not regard this as the end of the campaign against the reintroduction of cattle to the Victorian alpine parks. They would have been removed by the end of this month anyway because of the end of the summer grazing season. It is as important as ever to keep the pressure on both the State and Federal Government to make sure cattle don't return next season. (Ed)

More about cattle in the Alpine NP on the next page

**Opposition to Cattle in the Park— Public Meeting at Box Hill Town Hall**

**Alpine grazing battle not over till the cows come home – permanently!**

More than 500 people filled the Box Hill Town Hall on [Wednesday night, 6 April] in a strong show of public opposition to the State Government's six-year alpine grazing trial.

'This issue has angered conservationists, scientists and thousands of ordinary Victorians, and we intend to continue our campaign until the cows come home - permanently,' said the Victorian National Parks Association (VNPA) executive director Matt Ruchel.

Environment groups welcomed the cutting short of this year's grazing season, but warned that unless the trial was permanently abandoned, or outlawed by federal environment minister Tony Burke, the cattle could be back next summer.

'The cattle grazing trial is flawed scientifically and legally - Premier Baillieu should step in and permanently abandon the trial before this debacle embarrasses his government any further,' said The Wilderness Society's national campaign director Lyndon Schneiders.

Federal environment minister Tony Burke told the crowd that if existing federal laws don't prove strong enough to prevent damaging activities like cattle grazing, he will examine ways to amend the laws to give the Federal Government greater powers to protect national parks for future generations.

After [the 8 April] deadline to remove the cattle, the Federal Government will legally be able to begin a proper assessment of the grazing trial to determine if it breaches national environmental laws.

'Victorian environment minister Ryan Smith has agreed to remove the cattle this week, but he still hasn't said whether cattle will be sent back in again next summer, and the State Government hasn't backed away from the planned six-year trial,' Mr Schneiders said.

'The Bushfires Royal Commission did not recommend cattle grazing as a fuel reduction tool, or even make it a priority for further research,' said Mr Ruchel.

'What's really needed is an independent, highly-qualified scientific panel to assess and prioritise genuine research needs for fire and park management, in line with the Royal Commission's recommendations,' he said.

During the town hall meeting this public statement was endorsed by participants:

We call on the Victorian Government to:

1. No Alpine Grazing: Immediately and permanently remove cattle from the Alpine National Park and abandon the current deeply flawed trial.
2. Real Research: Initiate a highly qualified scientific panel to assess and prioritise research needs for fire and park management, in line with the Victorian Bushfires Royal Commission recommendations.
3. Improve Park Management: Significantly increase funding for systematic on-ground management including pest plant and animal control in the Alpine National Park and in the rest of the reserve system across the state.

We call on the Australian Government to:

1. Stop Grazing in the Alpine National Park: Use its powers under national environmental laws to ensure cattle are removed permanently from the Alpine National Park.
2. Make National Parks National: Initiate a review of national environmental laws and funding to improve recognition, protection and management (including pest animals and plants) of national parks and other protected areas across Australia.

For comment

Phil Ingamells, VNPA Parks Protection Officer - 0427 705 133.

Lyndon Schneiders, TWS national campaign director - 0451 633 200.

**National Parks Association of Victoria**, Media Release, Thursday, 7 April 2011

**What Koonung Bushwalkers Have Done about It**

The petition with 265 signatures gathered by the Koonung Bushwalking Club organised by Terry O'Callaghan is recorded in Hansard as having been presented to the Victorian Legislative Assembly on 3 March by local member Colin Brookes.

A public meeting with the banner *Cattle Don't Belong in National Parks* was held on 6 April in Box Hill Town Hall, organised by the Victorian National Parks Association and Wilderness Society. Six club members were sighted in the standing room only audience in a hall which has a seating capacity of 600. Two scientists from Melbourne University and a speaker from

the Wilderness Society presented an educated and convincing case for the banning of cattle, and the national significance of this issue. Tony Burke, Federal Minister for Sustainability, Environment, Water, Population and Communities, indicated clearly that he will work towards permanently banning cattle from National Parks, and was willing to alter the law if he does not have enough powers now to make this happen. He said the cattle will have been removed by 8 April and will not be allowed to return until the matter is resolved by State and Federal governments. The best action for concerned citizens is to write a letter to your local State MP (both Legislative Assembly and Legislative Council) seeking abandonment of the trial and permanent removal of the cattle from the Alpine National Park.

**Terry O'Callaghan, Wayne Rice and John Oldfield**

Koonung Walk Talk, Vol 26 No 3 April 2011, newsletter of the Koonung Bushwalking club

**State Government response**

The Victorian government has **not** agreed to abandon its 'trial'. All it has done is to promise to keep the Federal department abreast of developments should it move forward on the trial.

The Victorian government says it will refer a proposal for the trial to Mr Burke's department under the Environment Protection and Biodiversity Conservation Act before going ahead with reintroducing cattle to the Alpine NP next season. Failure to submit the research trial to scrutiny before it went ahead in January this year had been one of the grounds on which Tony Burke ruled against the 2011 trial.

Victoria's Environment Minister Ryan Smith has refused to back down and said the State government was standing by the controversial trial. 'We are committed to investigating the strategic use planned. Mr Smith said data from the first phase of the trial will now be assessed by his department before they push onto the 'next stage'.

Professor Mark Adams has withdrawn from any participation in the so called scientific study. No announcement has been made of who or what organization will replace him to make this assessment or undertake the design and assessment of any future study. (Ed)

# Report track problems



See a walking track that needs maintenance or repair?  
 Report problems or concerns to Bushwalking Victoria  
 using the Track Condition Report Form at  
<http://tinyurl.com/6fd4k9f>

**SUNRISE & SUNSET—MELBOURNE GPO**

Fri 6 May	0805	1828	EST	Fri 20 May	0817	1816	EST
Fri 3 Jun	0827	1809	EST	Fri 17 Jun	0834	1807	EST
Fri 1 Jul	0836	1811	EST	Fri 15 Jul	0833	1819	EST
Fri 29 Jul	0824	1811	EST	Fri 12 Aug	0809	1841	EST
Fri 26 Aug	0751	1853	EST	Fri 9 Sep	0730	1905	EST
Fri 23 Sep	0709	1916	EST	<b>EDST starts Sunday 2 October</b>			
Fri 7 Oct	0647	1929	EDST	Fri 21 Oct	0627	1942	EDST
Fri 4 Nov	0610	1957	EDST	Fri 18 Nov	0558	2012	EDST
Fri 3 Dec	0552	2026	EDST	Fri 17 Dec	0553	2038	EDST
Fri 31 Dec	0600	2045	EDST				

**Full Moons**

Tues 17 May, Thur 16 June, Fri 15 July, Sun 14 Aug, Mon 12 Sept, Wed 12 Oct, Fri 11 Nov, Sun 11 Dec Source: [www.ga.gov.au](http://www.ga.gov.au)

1/6 page advertisement	\$26.25	* Advertiser to supply 300 printed inserts each edition.
1/4 page advertisement	\$42.00	
1/3 page advertisement	\$52.50	Advertising is welcome but insertion is subject to the Editor's discretion. Products or services advertised in this publication are not endorsed or recommended in any way by Bushwalking Victoria.
1/2 page advertisement	\$78.75	
Full page advertisement	\$157.50	
Address list of affiliate clubs	\$52.50	
Insert for Newsletter*	\$52.50	
<b>Note:</b> Advertisements must be artwork ready		

## THE NATURAL ENVIRONMENT

### Silver gum sprouts from the ashes

The Black Saturday bushfires have resurrected a rare species of gum tree that five years ago faced extinction. The February 2009 fires, which devastated lives and property, were a saving grace for the Buxton silver gum. The gum is found in only two sites in Australia, both outside Melbourne, and a 2005 survey found the species was failing to regenerate.

But after the 2009 bushfires razed the 17-hectare Buxton Silver Gum Reserve near Marysville, the gum's hardy secrets were revealed. The fires burnt a lot of topsoil, exposing the tree's large underground nutrient-rich stems called lignotubers - previously unknown because the trees had only been examined above ground.

Parks Victoria ranger Julie Flack, who is in charge of the Buxton Silver Gum Reserve, said the discovery pointed to the trees' longevity. 'That's an indication that those trees may be many hundreds of years old,' she said. The gums can seed or sprout from the lignotubers, she said, and by June 2009 - four months after the fires - they were sprouting foliage. In September, the reserve flooded, creating ideal conditions for regeneration.

But what the gum doesn't need is another fire before the reserve has time to recuperate. 'We're hoping the trees will set viable seeds before we have another fire event,' she said.

Work is being done at the reserve to control other threats to the gums, including a native parasitic climber, cassythra, and grazing by rabbits.

**Michelle Draper**

The Age, 18 April 2011 With AAP

<http://www.theage.com.au/victoria/silver-gum-sprouts-from-the-ashes-20110417-1djs0.html>

## AROUND THE TRACKS

### The Grampians

#### Track and Road Closures Grampians NP

Please note that there are many road and track closures in the Grampians and that this situation is unlikely to change in the near future. It is essential that if planning a visit to check the Parks Victoria web site and/or with the Park staff. Go to [www.parkweb.vic.gov.au](http://www.parkweb.vic.gov.au) or phone: 131 186.

#### Letter to the Editor: Making Use of Volunteer Labour to Repair Tracks in the Grampians

[Regarding] the circular about the state of the Grampians and what we can help to do about it, I have been frustrated by Parks Victoria's unwillingness so far to get into discussion about a program for the use of volunteer labour. To be fair, however, I reckon that management has been somewhat overwhelmed by the sheer magnitude of the job that lies ahead.

Early this month we held a very successful working bee with Ballarat Bushwalkers on the Tunnel Track that goes over the Mt William range from near Pomonal to Lake Bellfield, joining the two ends of the Stawell water supply tunnel that goes under the range. This followed an initial session by the same group last October and it means that one more track [is open] and it will be possible to walk on bush tracks from Pomonal to Halls Gap using the Bellfield fireline. This has given me heart that if I can arrange more working bees I shall get the required support from Parks Victoria despite the fact that their work schedule is flat to the boards.

As far as I can see at the moment, voluntary labour will be directed towards tracks that can be quickly reopened and where flood damage has been minimal, partly because these tracks are taking a much greater hammering than usual since so many other tracks are closed. The other reason is that management are doing, or using contractors to do, a full scale assessment of all facilities in the park in order to draw up a plan of works to be done, priorities in doing those works, and what damage will be covered by insurance. They are not likely to use volunteers to help remedy insurance damage.

The park was completely closed after the January floods but the area north of Roses Gap was reopened fairly quickly. The rest of the park remains closed apart from a couple of walks close to Halls Gap: Boronia Peak and the east side of Chataqua Peak. By Easter they hope to have the Mackey's Peak track open to the Pinnacle, but walkers will have to return the same way. They also aim to have the Silverband Rd open as far as the Falls car park and a safe enough track to the falls themselves, despite the fact that the bridge lies 100m downstream and the creek bed at that point is three times its previous width; they will put stepping stones in the creek. It could take years to rebuild the road above the carpark.

They have determined from satellite photos that there are around 190 landslips in the Park with a minimum width of five



metres, and a total length of some 70 kilometres. The Halls Gap to Dunkeld Rd will remain closed beyond Silverband Rd for some six months as bridges have been damaged and the road has been cut by landslips, especially a huge one off Mt Abrupt. Repairs to the Mt Victory Rd could take up to nine months, and VicRoads have been working on both these roads since soon after the floods. Halls Gap came out of it reasonably well, though the water supply pipe was cut for a few days and the footbridge beside the road bridge over Stony Creek is somewhat buckled. The big fear was the stability of the hillside of the Wonderland range above the houses on the west side of Grampians road, but fortunately it held. The biggest loss has been in the tourist trade.

I haven't yet heard of the State Government opening the coffers as with the Prom, but perhaps that will come when the assessment of the damage is complete—hopefully. VicRoads reckon it will cost them \$20 million to repair their roads.

So there's the general picture. At least I can shortly start to burn off my piles of branches from all the trees that were blown over during spring and summer on account of the wet ground on my property. I have enough firewood to last me for years!!

**If any group feels the urge to help us get back towards normal (the park, that is, not me!) your assistance will be very much appreciated. Please let me know any dates that interest you, but don't set them in concrete until I have run them past PV and obtained their commitment.**

Best wishes to all, **David Witham**  
david@witham.net.au

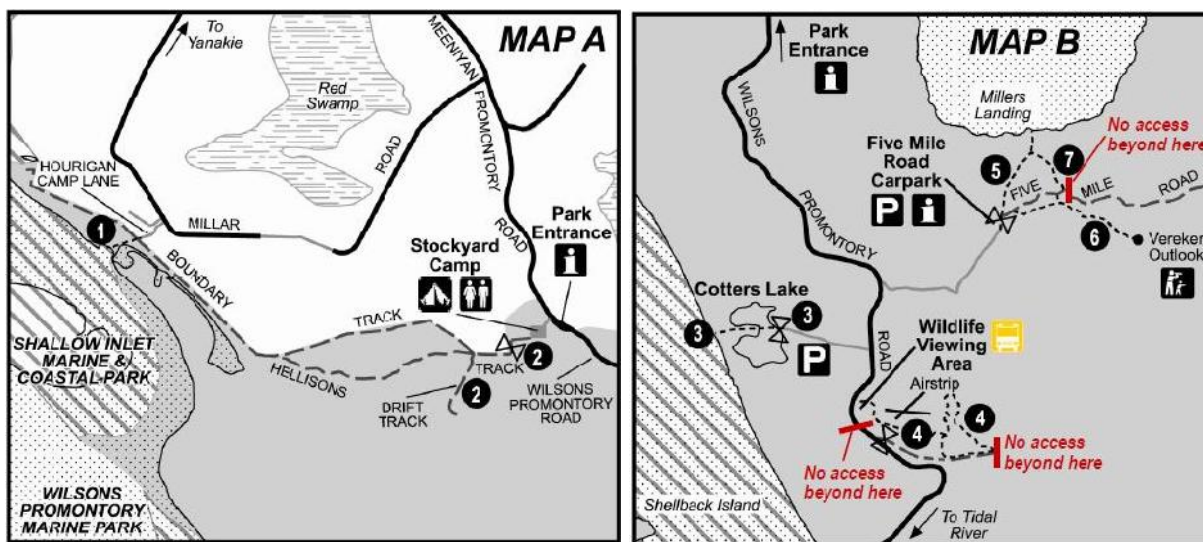
### Wilson's Prom—After Easter

VicRoads and Parks Victoria advise that after the Easter period Tidal River will close again to enable more permanent road and bridge repairs as well as remaining works on Parks Victoria assets.

Camping at Stockyard Camp in the north of the park will be available for general bookings from 26 April 2011. The maximum number people per site is eight. You must bring all food, drinking water and other essentials sufficient for your needs. The nearest groceries are in Yanakie, Fish Creek and Foster.

A limited number of short day walks will be open in the northern section.

Before visiting the park, confirm this and other information: contact the Parks Victoria Information Centre on 13 1963 or visit [www.parks.vic.gov.au](http://www.parks.vic.gov.au)



### WALK IN HER SHOES CHALLENGE

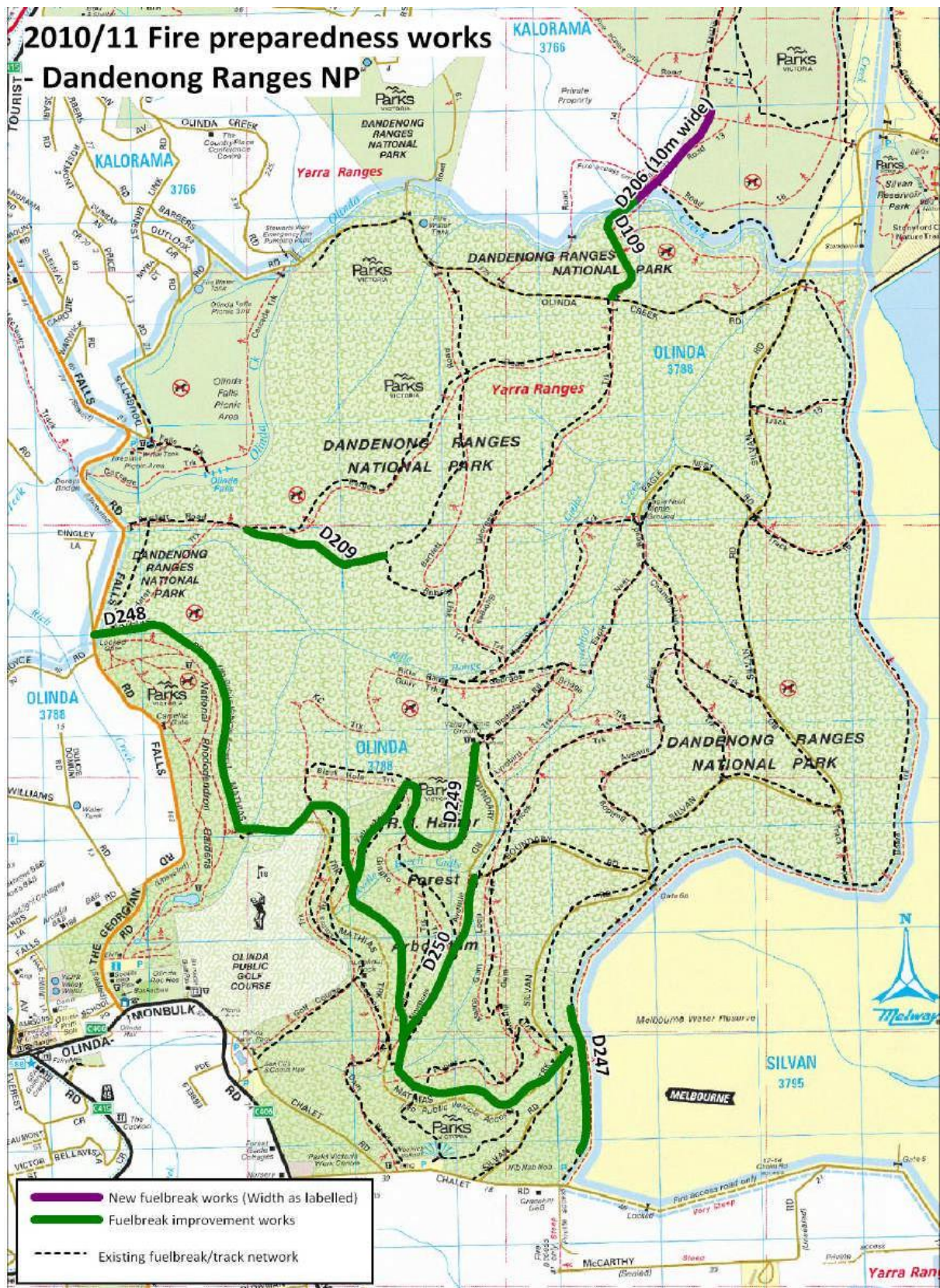
This year, CARE Australia is launching the Walk In Her Shoes Challenge to raise money that will be spent helping women and girls who live in poverty around the world.

Walk 10,000 steps a day for one week from Monday 30 May to Sunday 5 June as an individual or a team. The money you raise will go towards vital CARE projects that aim to reduce the distance women and girls need to walk to collect such things as water, and provide communities with access to healthcare, the ability to earn an income and the chance to get an education.

For more information and to register, visit <http://www.care.org.au/Page.aspx?pid=705>.

**Firebreaks in the Dandenongs**

Friends of the Hamer Arboretum provided Maroondah Bushwalking Club with the map below of ongoing firebreak construction in the Dandenong Ranges.



# ESCORTED GROUP TOURS

## European Waterways and Baltic States

- x19 day itinerary commencing 15 July 2011 including European Waterways river cruise plus tours of Budapest and Paris
- xThe river cruise of the beautiful Danube and Main Rivers on the MS Symphonie visits Budapest, Vienna, Melk, Regnesburg, Hilposten, Nuremberg, Bamberg, Wurtzberg, Wertheim, Frankfurt, Mainz and Strasbourg
- xOptional precruise tour of Baltic States includes: Tallin (2 nights), Riga (2 nights), Vilnius (2 nights), Warsaw (2 nights) and Krakow (2 nights)
- xPrice for River Cruise \$5,949 per person based on twin share accommodation
- xPrice for full tour including Baltic States \$8,800 based on twin share accommodation

## Walking Highlights of France & Italy

- x26 days commencing 06 September 2011
- xParis (3 nights) including walking tour of city
- xLoire Valley (1 night) including overnight stay in Chateau
- xTGV train to medieval city of Avignon (1 night)
- x6 DLQW 5HP\ QLJKWV LQFOXGLQJ ¶ 9LQFHQW 9DQ \*RJKµ WRXU
- xGordes (2 nights) including two local walks. The first walk is to a 12th century abbey and the second between Vaucluse and Luberon Mountains takes in country homes, wheat fields, vineyards and olive groves
- xAix En Provence (2 nights).
- xMonaco (1 night)
- xCoach to Monterosso (4 nights) one of the small fishing villages on the Cinque Terre. Three local walks covering ¶ & DPSLJOLD 5RXWH· ¶ 6HQWLHUR GH C
- xCoach to Portofino route
- xCoach to Como (2 nights) in the beautiful Lakes District
- xBoat to Varenna (1 night) including walk to view local scenery, grand villas and castle ruins
- x / XJDQR QLJKW LQFOXGLQJ ¶ 0RQWH
- xBelgirate on Lake Maggiore (2 nights)
- xVenice (3 nights) including guided walking tour, grand canal tour and visit to islands of Murano and Burano
- xGroup size between 12 and 16 people
- xPrice for land arrangements \$9,500 per person based on twin share accommodation

## Borneo

- x18 days commencing 22 May 2011
- xKuching (3 nights) including city and Bako National Park
- xHilton Batang Ai Resort (1 night) including tour of traditional Lemanak longhouses
- xKuching (2 nights) including day at leisure
- xRoyal Mulu Resort (2 nights) including Mulu caves tour
- xKota Kinabalu (3 nights) including visit to Kampung Night Market and Gaya Island tour
- xKinabalu National Park (2 nights) including jungle and Poring tree top canopy walks
- xSukau Rainforest Lodge (2 nights) including wildlife viewing expeditions
- xSandakan including Sepilok Orang Utan Sanctuary and Australian War Memorial. Kota Kinabalu (1 night)
- xTotal price for tour including airfares \$5,300 per person based on twin share accommodation

Please contact us for copies of tour brochures

▲ **Spectrum Holidays**

511 Whitehorse Rd Mitcham VIC 3132

enquiries@spectrumholidays.com.au www.spectrumholidays.com.au

Tel- 8804 2420 Fax- 8804 2426

**Who's Who at Bushwalking Victoria**

Reg No A0002548Y ABN 88 344 633 037

**Office**

Administration Officer: Jenny Sykes  
 PO Box 1007 Templestowe Vic 3106  
 Phone: 8846 4131 Fax: 9846 7473  
[admin@bushwalkingvictoria.org.au](mailto:admin@bushwalkingvictoria.org.au)  
[www.bushwalkingvictoria.org.au](http://www.bushwalkingvictoria.org.au)  
 Office Hours: 9.30-3.30  
 Tuesday, Thursday & Friday

**Office Bearers**

President: Chris Towers  
[president@bushwalkingvictoria.org.au](mailto:president@bushwalkingvictoria.org.au) 9802 4449  
 Skype: ec.towers  
 Vice President: Barbara Guerin  
[vp@bushwalkingvictoria.org.au](mailto:vp@bushwalkingvictoria.org.au)  
 Secretary: Val Wake  
[secretary@bushwalkingvictoria.org.au](mailto:secretary@bushwalkingvictoria.org.au)  
 Treasurer: Fred Bover  
 9439 7092 0439 002 844  
[treasurer@bushwalkingvictoria.org.au](mailto:treasurer@bushwalkingvictoria.org.au)

**General Board Members**

Catherine Guli [catherine@bushwalkingvictoria.org.au](mailto:catherine@bushwalkingvictoria.org.au)  
 Doug Kneen [doug@bushwalkingvictoria.org.au](mailto:doug@bushwalkingvictoria.org.au)  
 Carole Petchell [carole@bushwalkingvictoria.org.au](mailto:carole@bushwalkingvictoria.org.au)  
 David Reid [david@bushwalkingvictoria.org.au](mailto:david@bushwalkingvictoria.org.au)  
 Dave Rimmer [tracks@bushwalkingvictoria.org.au](mailto:tracks@bushwalkingvictoria.org.au)  
 John Creaser [john@bushwalkingvictoria.org.au](mailto:john@bushwalkingvictoria.org.au)

**Standing Committees**

Bush Search and Rescue Victoria: Peter Campbell  
[convener@bsar.org](mailto:convener@bsar.org)  
 Manager Bushwalking Environment: Dave Rimmer  
[tracks@bushwalkingvictoria.org.au](mailto:tracks@bushwalkingvictoria.org.au) 0458 998 872  
 Track Maintenance: Jim Harker  
[trackwork@bushwalkingvictoria.org.au](mailto:trackwork@bushwalkingvictoria.org.au) 9547 1152

**Standing Committees (cont)**

Conservation Projects: Steven Robertson  
[conservation@bushwalkingvictoria.org.au](mailto:conservation@bushwalkingvictoria.org.au) 9762 5367

**Specialist Officers**

Insurance: —  
[insurance@bushwalkingvictoria.org.au](mailto:insurance@bushwalkingvictoria.org.au)  
 Publications and News Editor: Joslin Guest  
[editor@bushwalkingvictoria.org.au](mailto:editor@bushwalkingvictoria.org.au)  
 Federation Walks Coordinator: Sylvia McLean  
[sylvia@bushwalkingvictoria.org.au](mailto:sylvia@bushwalkingvictoria.org.au)

**Consultants**

Strategy Consultant: Tony Walker  
[strategy@bushwalkingvictoria.org.au](mailto:strategy@bushwalkingvictoria.org.au)  
 Honorary Auditor and Accounting Consultant: Jo O'Brien  
 Land Management Submissions: Phil Brotchie  
[land@bushwalkingvictoria.org.au](mailto:land@bushwalkingvictoria.org.au) 9504 4626

**Representatives on Other Organisations**

Bushwalking Australia:  
 Victorian Delegate: Chris Towers  
 Victorian Deputy Delegate: David Reid  
 Please contact via the office

**Organisations where BWV Members Provide a Bushwalking Perspective**

Metropolitan Melbourne Reference Group: Phil Brotchie  
 Outdoor Recreation Centre Committee of Management: Chris Towers  
 Adventure Activity Standards (AAS) Technical committee: Paul Chamings  
 Living Links Steering Committee: Tony Walker



**Bushwalking News Victoria**

If undeliverable  
 please return to

**Bushwalking Victoria Inc.**  
 PO Box 1007  
 Templestowe 3106  
 Victoria